

Behaviour Support Service (BSS)

A guide to our provision and services



Advice for supporting children and young people back into school following the Covid-19 pandemic.

As schools reopen following closures as a response to the Covid-19 pandemic, it is likely that there will be uncertainty as we ask children to cope with this strange and stressful disruption and adapt to a “new normal” in the coming weeks and months. Change and certain allowances and modifications may be needed to manage the emotions and behaviour of all children and especially for those who have experienced particular difficulties or trauma during the pandemic. Schools will also need to consider the needs of children and young people who have previously experienced challenges in attending school or found managing their emotions difficult and who may have already demonstrated any type of challenging behaviour.



If you wish to consider ways in which the Behaviour Support Service can support you and your school through this transition, please contact us on BSS@newham.gov.uk to discuss ways we can work together.

Who we are

Head of Service



Sharon Grainger

☎ 020 3373 7632

✉ Sharon.Grainger@newham.gov.uk

Secondary



Pete Sullivan

☎ 020 3373 6910

✉ Pete.Sullivan@ewham.gov.uk

Early Years and Primary

Ruth Donovan

☎ 020 3373 2059



✉ Ruth.Donovan@newham.gov.uk



Becky Evans

☎ 020 3373 0935

✉ Becky.Evans@newham.gov.uk

Seconded Staff – Headstart and MASH

Suus-anna Harskamp

☎ 020 3373 0545



✉ Suusanna.Harskamp@newham.gov.uk



Louise O'Connor

☎ 020 3373 1627

✉ Louise.Oconnor@newham.gov.uk

Who is it for?

Children and young people, from nursery to school leaving age, exhibiting social, emotional, behavioural and mental health difficulties and their families. The purpose of the service is to enable all pupils to access the support they need to raise achievement and prevent exclusion.

Our Aims

- ✓ To reduce exclusions.
- ✓ To improve outcomes for individuals and families.
- ✓ To increase knowledge and expertise in schools and settings in relation to SEMH and interventions.



A student's experience in school remains one of the most insightful indicators of later life success in any one of a number of metrics. For many it is the best chance they will ever have to flourish. How they conduct themselves at school is crucial to that experience. Helping them develop good behaviour is therefore one of the most important tasks a school faces.

Tom Bennett, Independent Review of Behaviour in Schools, March 2017

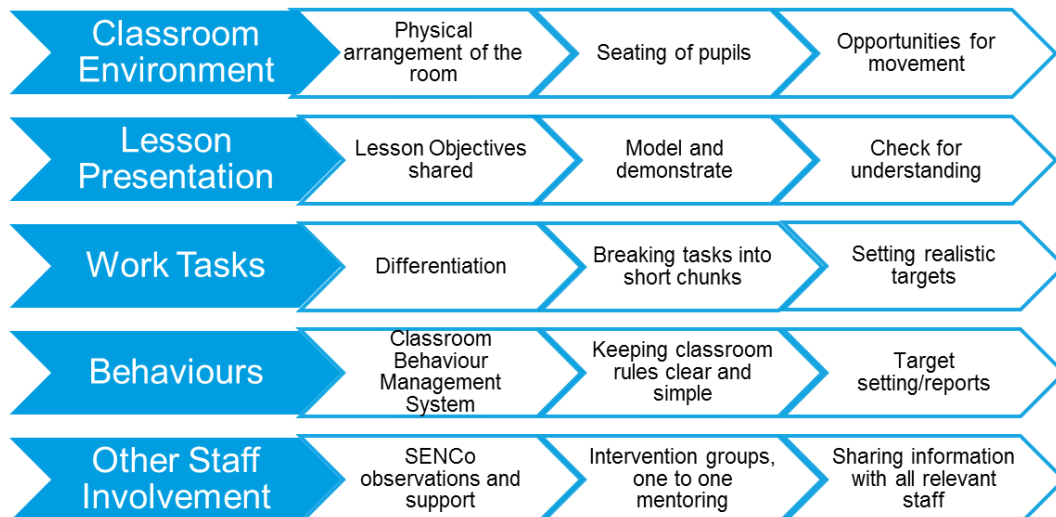
What is an Individual Referral?

An Individual Referral is a gathering of information, through meetings and observations of the pupil. Information is collated into a detailed report which provides advice and suggests ways forward for both setting/school and home, where relevant.

Two review meetings of the advice/strategies are routinely held between BSS and the school/setting and parents.

Before an Individual Referral is made...

Before an individual referral is made, the following should be considered:



Making an Individual Referral

Request a form at BSS@newham.gov.uk. All forms are also available on Newham Connect.

Before you send in your referral form, please ensure:

- You have given as much detail as possible
- The parents have agreed to the referral and signed the form
- You have listed your contact details

Send completed forms to BSS@newham.gov.uk

Individual Referral What happens next?

Individual referrals are allocated to a member of the BSS team at a weekly allocation meeting. The BSS teacher carries out two observations of the pupil and meets with relevant staff to gather information about the pupil.

A meeting with parent/s is usually included as well as other professionals who are, or have been, involved.

A detailed report with advice and strategies is produced. These are reviewed after six to eight weeks. A second review is held after another six to eight weeks and signposting to other services where this is thought necessary.

What is a Year Group or Class Referral?

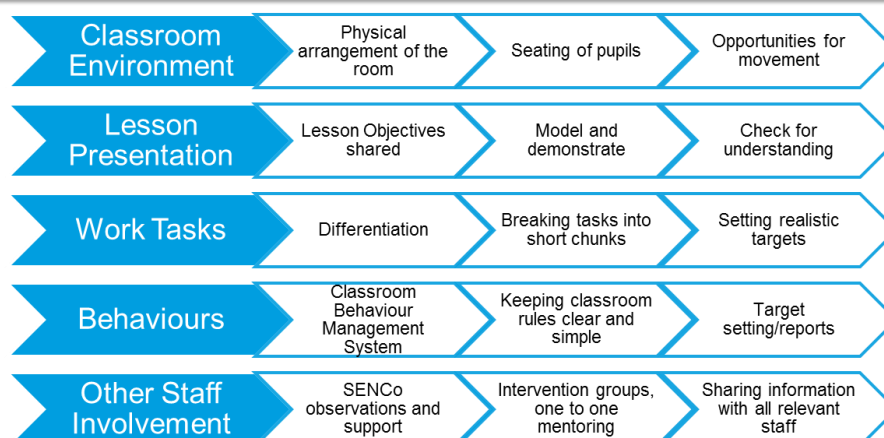
A year group or class referral is a gathering of information about a group, class or cohort of pupils based on a meeting with school personnel and observations in a variety of settings around the school.

The information is collated into a detailed report which will provide further advice, strategies and recommendations.

Two review meetings of the advice, strategies and recommendations, where applicable, will be provided.

Before a Year Group or Class Referral is made...

Before a Group or Class Referral is made, the following should be considered:



Making a Year Group or Class Referral

Request a form at BSS@newham.gov.uk. All forms are available on Newham Connect.

Before you send in your referral form, please ensure:

- You have given as much detail as possible
- You have listed your contact details

Send completed forms to BSS@newham.gov.uk

What schools say about our service

“When parents hear a “Professional BSS” voice, they seem to take note.”

“Our school has always valued the work that the BSS team do and have always had excellent practitioners working with us to support our pupils, their families and our staff.”

“Providing strategies to teachers and support staff by modelling and supporting implementation is the most effective approach.”

What is a Pastoral Support Plan?

A Pastoral Support Plan is one aspect of a continuum of provision that schools can provide for pupils with social, emotional, and behavioural difficulties.

A Pastoral Support Plan (PSP) is:

- school based
- time limited to 16 weeks (with an option to extend for certain cases)
- up to 3 SMART behavioural targets with practical strategies to achieve them and the ability to review and revise as circumstances change
- owned by the school and is set up by a key member of staff, e.g. SLT, Inclusion
- monitored daily by a key pastoral member of staff, e.g. Year Head, BESD LM
- a standardised process
- agreed with the student and their parents/carers

Who is a Pastoral Support Plan for?

DfE guidance notes that a PSP should be used for young people where most of the following apply:

- A young person whose behaviour is rapidly deteriorating and where an Individual Behaviour Plan is not working.
- A young person who has had two or more fixed term exclusions.
- A young person who has had one exclusion of ten days or more.
- A young person who is in danger of permanent exclusion.

PSP and Mental Health

Students with particular mental health issues are unlikely to be able to commit to behavioural targets. Their capacity to self-assess, agree possibilities for change or carry this through is compromised.

CAMHS guidance is recommended before initiating or restarting a PSP in these circumstances.

PSP and Return from Exclusion

If a young person is returning from an exclusion of ten days or more, it is recommended that a PSP is developed prior to return to school in order for it to be used as part of the reintegration process.

Making a PSP Referral

Request a form at BSS@newham.gov.uk. All forms are available on Newham Connect.

Before you send in your referral form, please ensure:

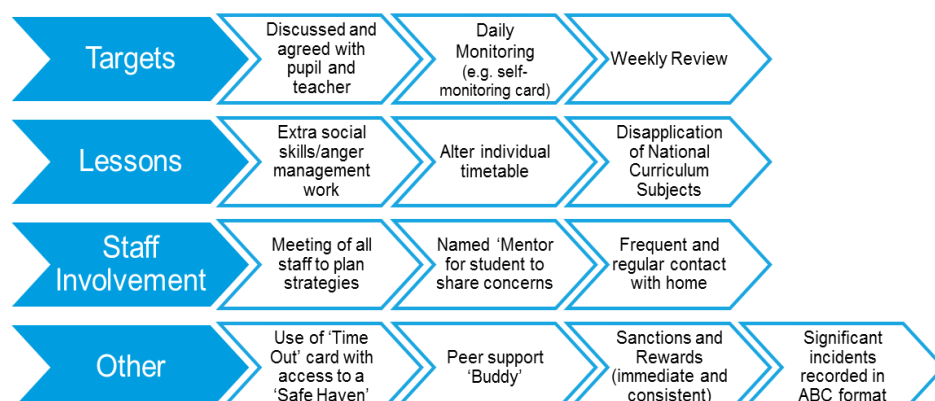
- You have given as much detail as possible
- Parents have been informed of the referral being made
- You have put your contact details

Send completed forms to BSS@newham.gov.uk

Before a PSP Referral is made...

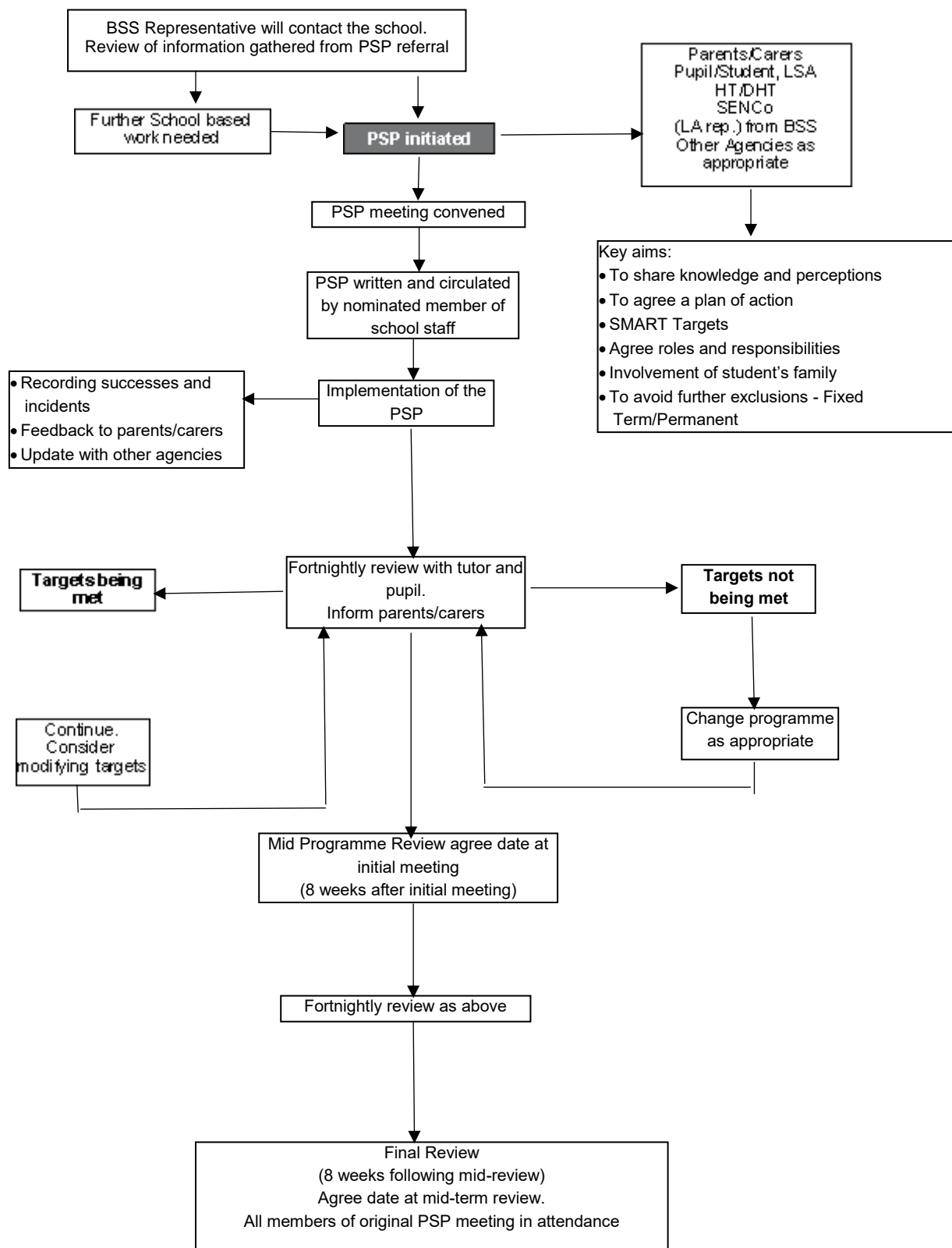
In order to ensure that a PSP is at its most effective for the student and realistically manageable for the school and parent/carers, it is recommended that the school implement a range of other interventions prior to the use of a PSP.

These are as follows:



PSP Referral

What happens next?



Short term support for Nursery and Reception Pupils

In some cases, when BSS start working with Nursery or Reception staff regarding a child in their setting, the BSS teacher may feel that the child would benefit from some additional support to help them develop their personal, social and emotional skills. These may be children who are finding it difficult to settle and cope with changes at nursery/school and at home, children finding it hard to make relationships in nursery/school and children whose behaviour can be difficult. We think that it is important that children are supported early so that they can enjoy nursery/school life and make the best progress. Early intervention often helps prevent difficulties becoming a barrier to their learning and social development.

With the agreement of parents, BSS can offer one session a week with their child (two and a half hours) from an experienced Early Years Practitioner (Ruth Donovan) to work on individual targets. This usually lasts for around two terms, although it varies depending upon the needs of each child. The input is reviewed regularly to discuss and agree ways forward.

The focus of this work includes: reinforcing clear boundaries and routines, modelling appropriate social interactions and using positive language to encourage children to do the right thing and feel good about themselves.



Reintegration support for Excluded Pupils or those Returning from Alternative Provision

BSS offers support for reintegration for primary and secondary pupils identified at Pupil Placement Panel. Once the case is agreed and it is felt that the pupil would benefit from a Pastoral Support Plan, the receiving school should complete a referral form.

For primary pupils at RIET (Reintegration Into Education Team), where BSS have had recent involvement prior to the placement, the case will remain 'open' to the team and support will recommence when the pupil is ready to return to their mainstream school. BSS will attend the reintegration meeting and provide ongoing support and advice as required.

For secondary pupils returning to their mainstream school from a direction off site, where the school feels the pupil will benefit from BSS involvement either as an individual referral or a PSP, the appropriate referral form should be completed.



Training

We offer an extensive range of central and bespoke training courses for Early Years, Primary, Secondary, SENCos, School Governors and NQTs.

Topics for training include:

- ⇒ Running Social Skills Groups
- ⇒ Positive Behaviour Management
- ⇒ Exclusions
- ⇒ Building Resilience
- ⇒ Nurture Groups

For further details of BSS training go to
www.NewhamConnect.uk
or contact bss@newham.gov.uk

What our schools say

BSS carry on doing exactly as you
are! Absolutely amazing!

Promoting Positive Behaviour in the Early Years





It has been an eye opener to learn about what these children go through, feeling trapped or petrified.

The Quiet Ones

I loved the training! I found it useful and informative! Thank you!

Sunshine and Shadows: Building Resilience



I have gained a deeper understanding about the concept of resilience in schools and how to incorporate this into the school ethos and policies.

Sunshine and Shadows: Building Resilience

Access and Inclusion Service
Behaviour Support Service (BSS)

The Tunmarsh Centre
Tunmarsh Lane
London E13 9NB



020 3373 8378



bss@newham.gov.uk