



# **Year 3 Parents' Meet and Greet**

Keir Hardie Primary School  
Wednesday 20th September



# Welcome

## Year group Team:



Ms Akhtar  
Class teacher 3A



Ms Crisp  
Class teacher 3A



Miss Moalim  
Class teacher 3H



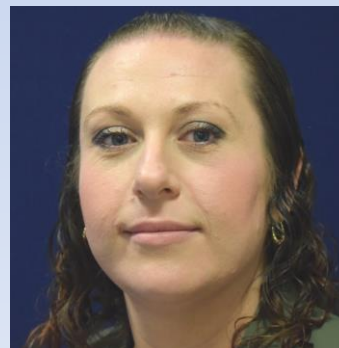
Mrs Razanoviene  
Teaching assistant



Ms Verchenko  
Teaching assistant



Mr John  
Learning  
mentor



Miss Woodhall  
Assistant  
Headteacher &  
SENDCo



# Expectations

Every minute counts:

- Punctuality – 8:45am (start) 15:15 (finish) - learning starts straight away at 8:45 with basic skills
- Attendance – 96%
- Behaviour For Learning - MAGIC habits high expectations
- Reading – at least 20 mins / for pleasure
- Homework

A couple of important attendance reminders:

- School attendance is mandatory for all pupils
- Leave of absence / holidays will not be authorised during term time
- For any sickness absences / or medical appointments, please ensure medical proof is provided to the school so the absence can be authorised.
- In line with government regulations, if a child's attendance falls below 95% in a term, they will be referred to the Attendance Management Service.

If there are 6 unauthorised sessions (1 session = half a day) in half a term, a penalty notice of £60 per parent may be issued.



# MAGIC

- MOTIVATION



- ATTITUDE (positive)



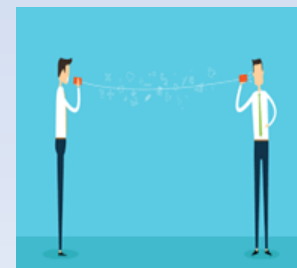
- GUMPTION



- INDEPENDENCE



- COMMUNICATION



# Learning Journeys

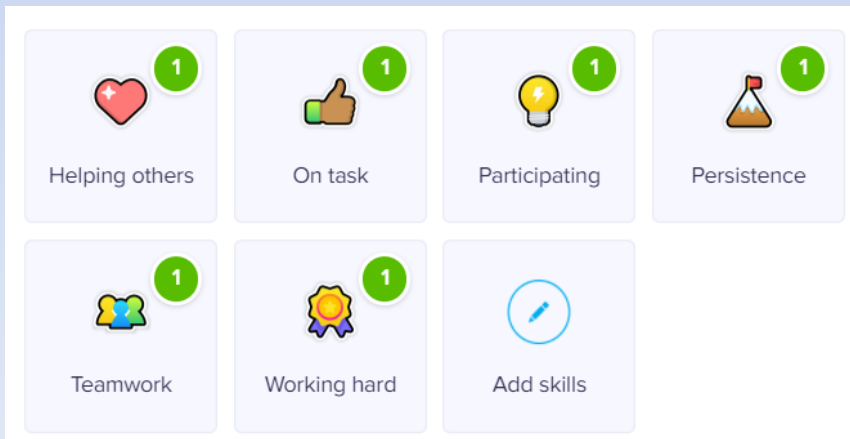




# Class Dojo

To encourage the children to be active learners and to use their Magic Habits, we use Class Dojo as part of our reward system.

Class Dojo is also used to maintain communication between us and you; the parent/carers.



If you need any help please speak to the class teacher  
Working hours - please be respectful when you message (working hours)

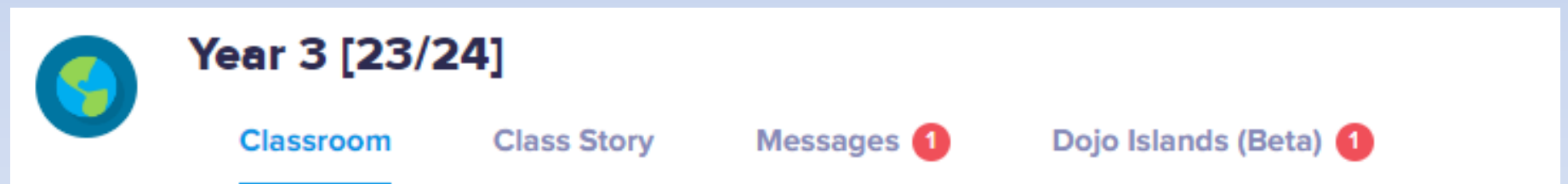
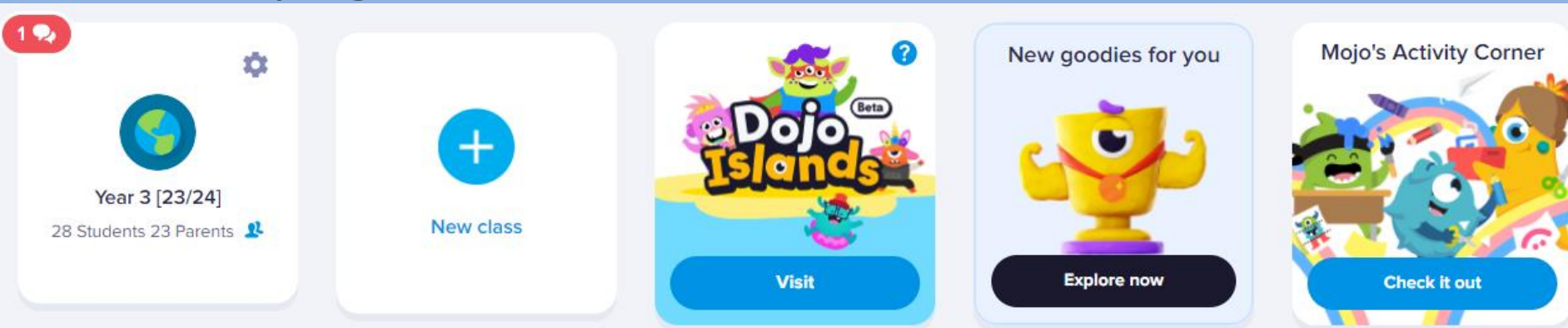
Response time will not be instant

Dojo is not for reporting absences - you need to call the office



# Class Dojo

Home page:

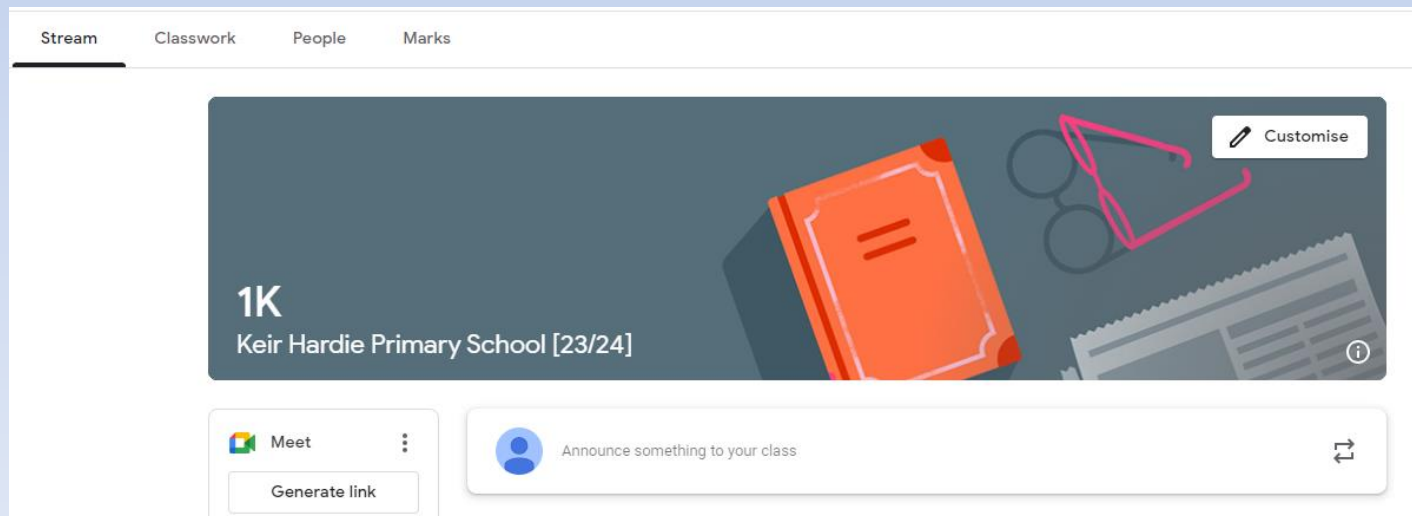






# Google Classroom

- Google classroom login details for your pupils are stuck in the reading is fun book.
- pupils can log in to the classroom to access the homework or weblinks to particular research projects.





# Newsletter

The newsletter contains the topics that will be covered during the Autumn term.

**English-** We are learning to write letters.

**Maths-** place value

**Science-** animals including humans-nutrition and movement

**History-** early britons - prehistory stone age, bronze, iron age.

**Art-** cave paintings

**RE-** How do Jews celebrate their beliefs at home and at the Synagogue?

**PSHE-** relationships- friends and family

**Educational visits-**

National Gallery 4.10.23 St Johns Wood Synagogue- 11.10.23 TBC

Reminder: please check parentmail & Dojo for key information.

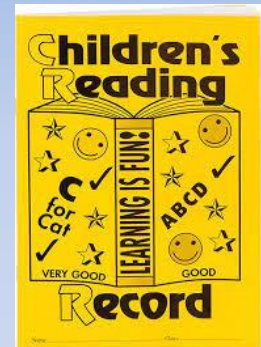


# Reading

*The most important skill any child can leave primary school with is the ability to read independently and effectively for meaning. At Keir Hardie Primary, we place a heavy emphasis on teaching reading. You can help us by ensuring that you read with your child 5 times a week for 30 minutes.*

Strategies to support reading

- Independent Reading
- Use of school library
- Canning Town Library



School reading books are changed once a week. Parents are encouraged to record any comments or WOW moments in their child's reading is fun book.



# Homework

- Homework will be set weekly.
- Set every Friday and to be completed by the following Thursday.
- In their purple books, children can practise their spellings and record their other activities.
- Every Friday, children will be tested on the spellings they practised for homework
- Feedback will be provided with stamps:  
satisfactory, good and outstanding



# Intervention

Interventions are put in place in school to support with improving pupil outcomes.

The majority of the interventions are run during the school day, but your child may be invited into school to come into school for a morning intervention

If your child is invited to an intervention they need to arrive on time, otherwise the place will be given to another pupil.

Interventions for Year 3 are;

Speech and language interventions

1:1 phonics

reading for fluency

Numicon - plugging the gaps

ELSA - emotional literacy support

Teacher interventions

nurture groups



# PE kits

- House colours
- Appropriate footwear
- No earrings
- Roll-on deodorant
- Hairbands



# Healthy eating



- **Fruit, vegetables, milk & water are available throughout the day.**
- Send your child with water in a labelled bottle— please do not bring flavoured water, juice, fizzy drinks etc.
- School dinners are free and accessible for all Year 1 children.
- Packed lunches should contain a range of healthy snacks
- Party bags - non-food based.
- **We are a NUT FREE school**





# Online Safety



Hector's world - an online cartoon series





# Behaviour Expectations

- MAGIC habits certificate
- Star of the Week certificate
- House points
- Dojo points - Children get dojo points for their learning and behaviour
- Friendship Friday- every last Friday of the month
- In school we use the language of choice



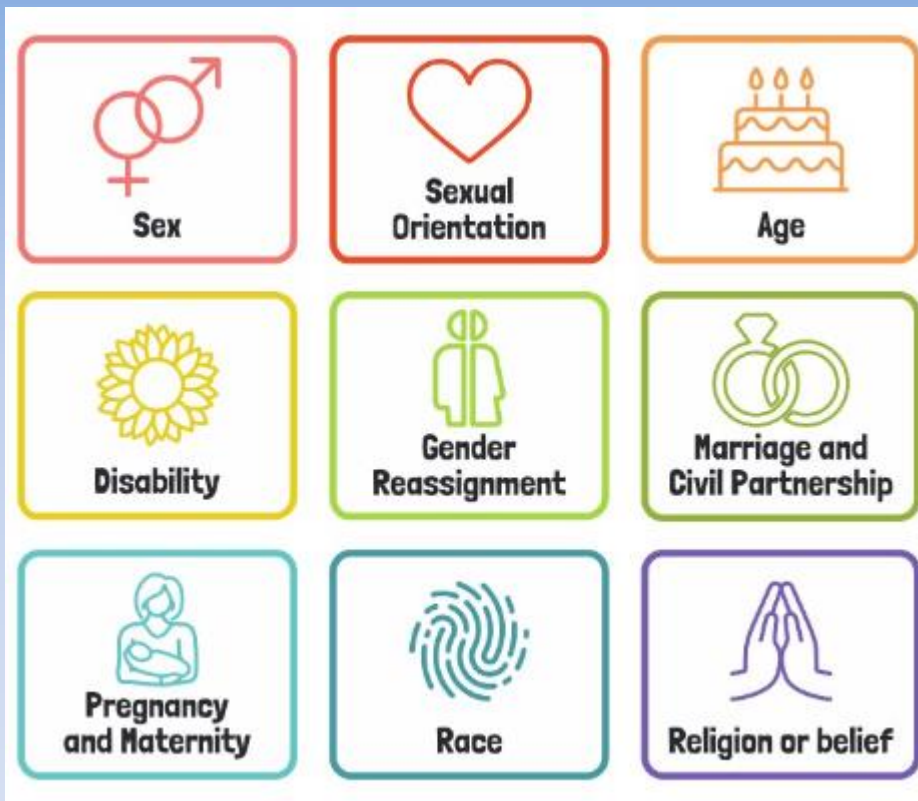
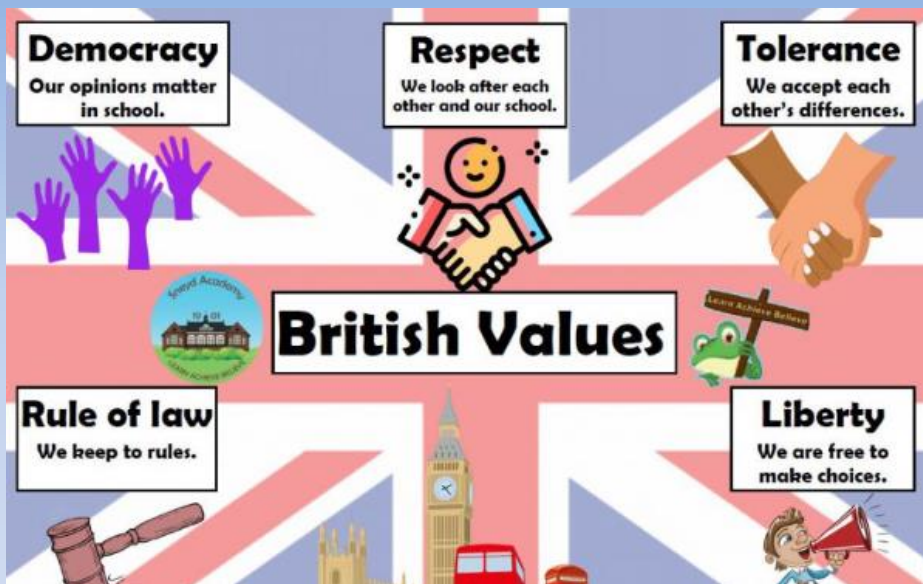
# Parents' Evening

At our first parents evening in the Autumn term we will share the targets for your child in the following areas:

- Reading
- Writing
- Maths.
- MAGIC habit.



# British Values/Protected Characteristics





# Home/ School Agreement

## For pupils

### To help me do my best I will:

- always try my hardest and take part in school activities
- be helpful and polite to other children and adults
- follow all school rules, including the class charter
- get to school every day and be on time
- complete and return all homework
- wear the school uniform every day and PE uniform for PE
- use SBs if I am stuck and will share any problems with my teacher or one of my 5 trusted adults
- promote the school positively
- show my MAGIC HABITS every day

## For parents/carers

### To help my child I will:

- encourage my child to do their best in all that he/she does
- encourage positive and polite behaviour at all times to ensure my child behaves well at school
- ensure my child attends school every day and on time, unless he/she is ill
- ensure my child completes homework including reading, spelling and times tables and brings the correct equipment to school each day
- ensure my child wears the school uniform
- encourage my child to "have a go" and have 'I can do' attitude and ask for help if needed
- provide my child with experiences that support their learning outside school ( museums, libraries)
- discuss any concerns with the class teacher and attend school meetings.
- Teach my child how to be tolerant and accepting of differences reflected in our school's diversity.

## For the school

### Staff will:

- prepare exciting, appropriately-pitched lesson and support your child's learning
- provide a stimulating, safe environment for your child to learn, develop and feel safe
- help your child to understand what he/she is learning
- give rewards, praise and attention to those who are helpful
- provide a range of homework to support your child's learning
- teach tolerance and acceptance in accordance to the British Values
- communicate with you about your child's progress and when we are concerned about your child's wellbeing or behaviour
- be role models and always show our MAGIC Habits
- Safeguard your child by following the school's policies and procedures.



# Safeguarding

Keir Hardie is committed to develop and sustain a strong safeguarding culture which supports us all to safeguard children and creates a positive and respectful learning environment in which everyone can flourish.

*Safeguarding and promoting the welfare of children is **everyone's** responsibility. **Everyone** who comes into contact with children and their families has a role to play. In order to fulfil this responsibility effectively, all professionals should make sure their approach is child-centred. This means they should consider at all times, what is in the **best interests** of the child”.*

*(Keeping Children Safe in Education – DfE, September 2023)*

*The school follows the Department Of Education's and the Local Safeguarding board guidance to ensure we safeguard our school community.*